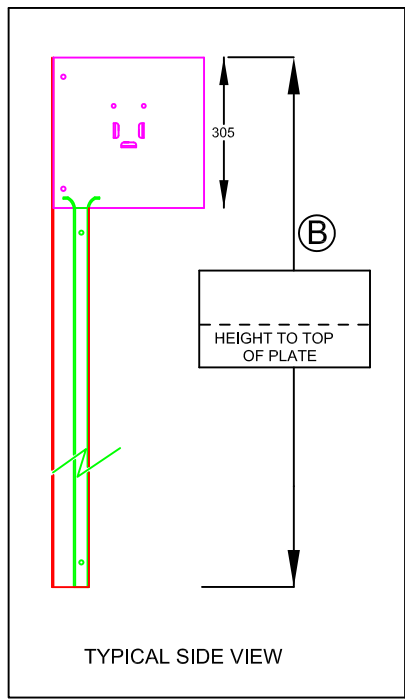


MOTORISED SHUTTER DOOR		LEGEND	
LEFT HAND MOTOR POST		PLATE 305mm	2
FACE FIX ANGLE TOED IN		ANGLE 75 x 50	2
		GUIDE 65 x 25	2
		BOX 40 x 40	2
DRG NO	INERTIA 01	REV	0
DRAWN BY	CADPLAN .NET	SCALE	NTS
		DATE	18/04/2012

**PARAMOUNT 26 LTD**  
 UNIT 5B & C  
 BARKING BUSINESS CENTRE  
 25 THAMES ROAD  
 BARKING, ESSEX IG11 0JP

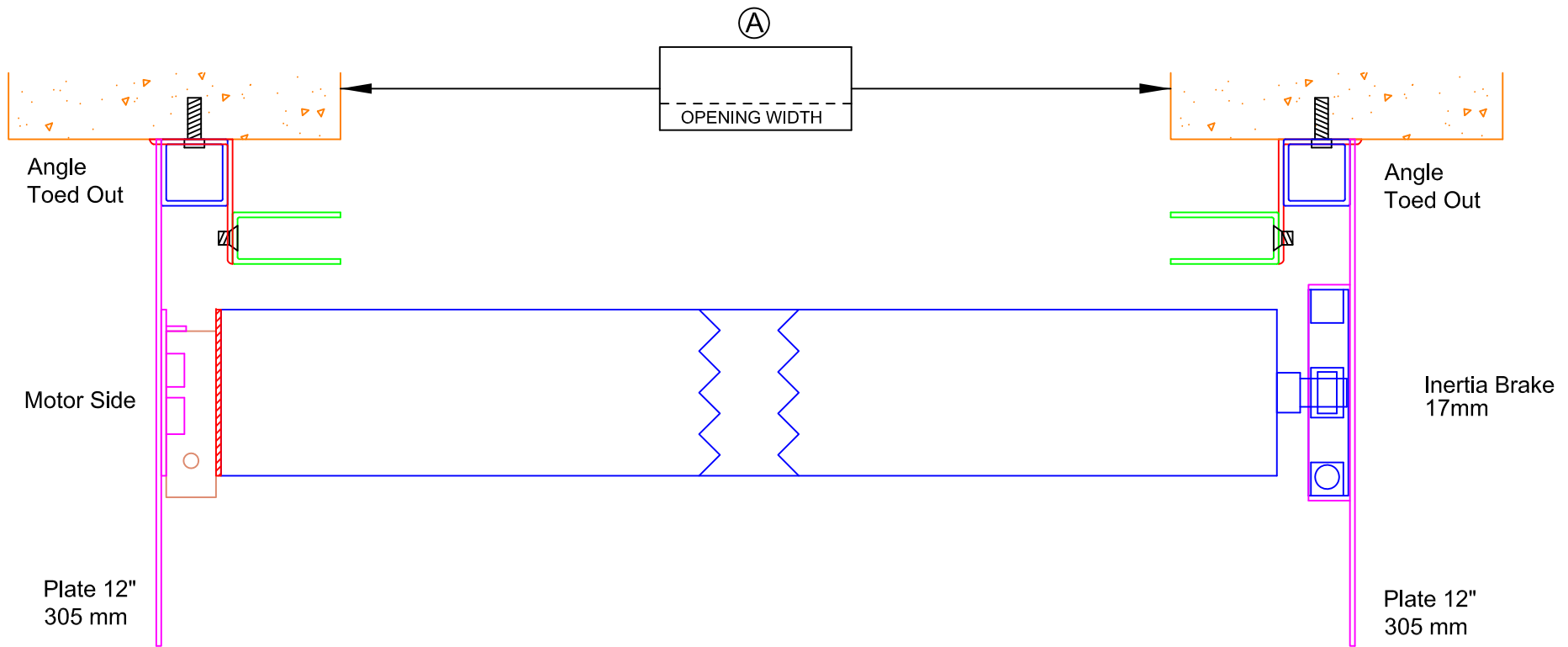
TEL : 020 8532 7940      FAX : 020 8591 1144  
 EMAIL : [info@paramount26.co.uk](mailto:info@paramount26.co.uk)  
 WEBSITE : [www.paramount26.co.uk](http://www.paramount26.co.uk)




**INSTRUCTIONS TO CLIENT**

- PLEASE INSERT MEASUREMENT AT **(A)** AND **(B)**
- SIGN, PRINT NAME AND DATE THE DRAWING
- FAX THE DRAWING TO 020 8591 1144
- OR EMAIL TO [info@paramount26.co.uk](mailto:info@paramount26.co.uk)
- RETAIN COPY FOR YOUR OWN RECORDS

CLIENT
SIGNATURE
PRINT NAME
DATE

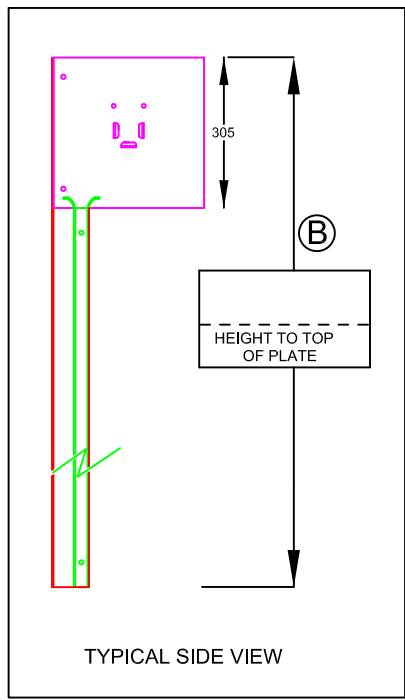


MOTORISED SHUTTER DOOR		LEGEND	
LEFT HAND MOTOR POST		PLATE 305 mm	2
FACE FIX ANGLE TOED OUT		ANGLE 75 x 50	2
		GUIDE 65 x 25	2
		BOX 40 x 40	2
DRG NO	INERTIA-02	REV	0
DRAWN BY	CADPLAN .NET	SCALE	NTS
		DATE	18/04/2012



**PARAMOUNT 26 LTD**  
 UNIT 5B & C  
 BARKING BUSINESS CENTRE  
 25 THAMES ROAD  
 BARKING, ESSEX IG11 0JP

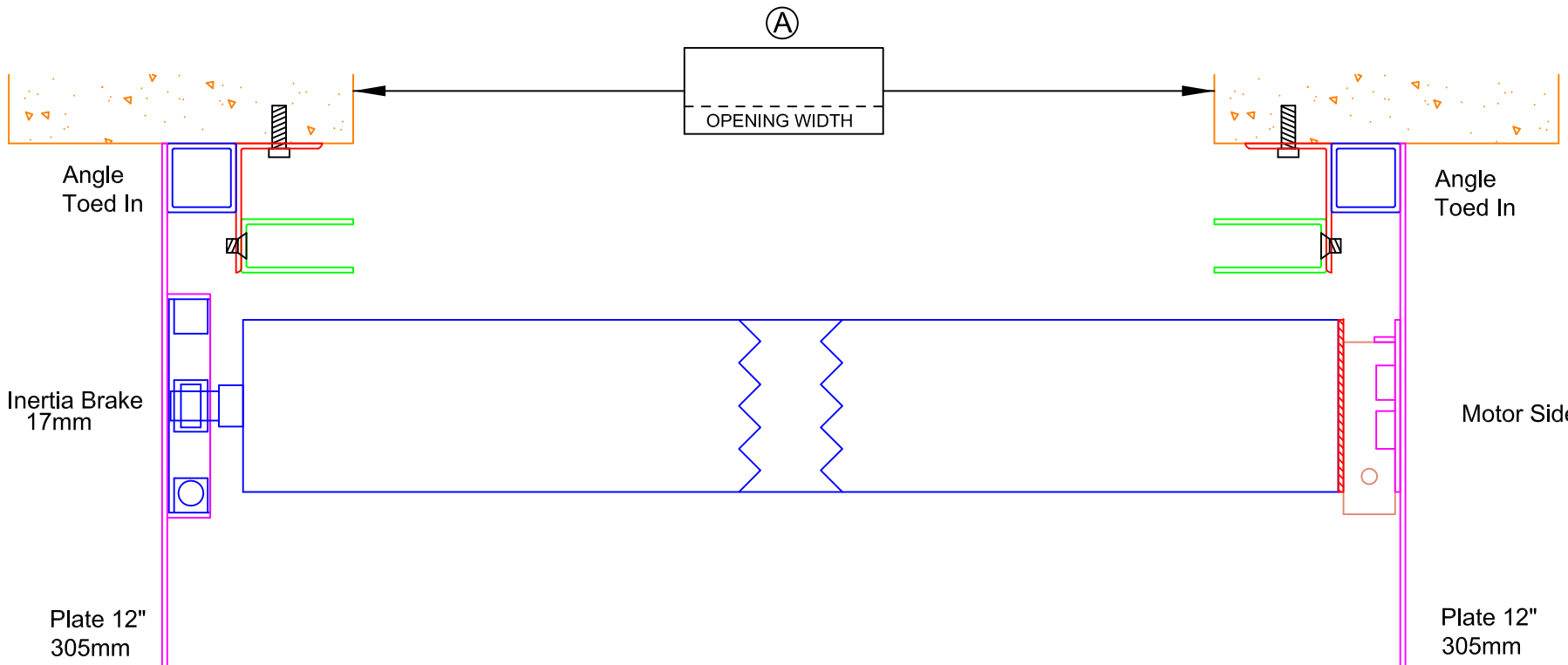
TEL : 020 8532 7940      FAX : 020 8591 1144  
 EMAIL : [info@paramount26.co.uk](mailto:info@paramount26.co.uk)  
 WEBSITE : [www.paramount26.co.uk](http://www.paramount26.co.uk)



**INSTRUCTIONS TO CLIENT**

- PLEASE INSERT MEASUREMENT AT **(A)** AND **(B)**
- SIGN, PRINT NAME AND DATE THE DRAWING
- FAX THE DRAWING TO 020 8591 1144
- OR EMAIL TO [info@paramount26.co.uk](mailto:info@paramount26.co.uk)
- RETAIN COPY FOR YOUR OWN RECORDS

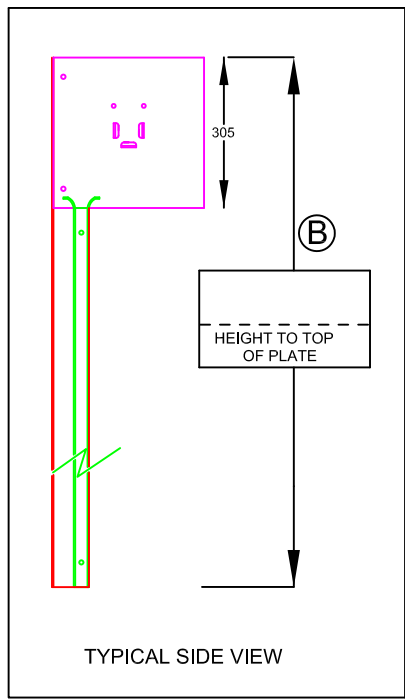
CLIENT
SIGNATURE
PRINT NAME
DATE



MOTORISED SHUTTER DOOR		LEGEND	
RIGHT HAND MOTOR POST		PLATE 305mm	2
FACE FIX ANGLE TOED IN		ANGLE 75 x 50	2
		GUIDE 65 x 25	2
		BOX 40 x 40	2
DRG NO	INERTIA-03	REV	0
DRAWN BY	CADPLAN .NET	SCALE	NTS
		DATE	18/04/2012

**PARAMOUNT 26 LTD**  
 UNIT 5B & C  
 BARKING BUSINESS CENTRE  
 25 THAMES ROAD  
 BARKING, ESSEX IG11 0JP

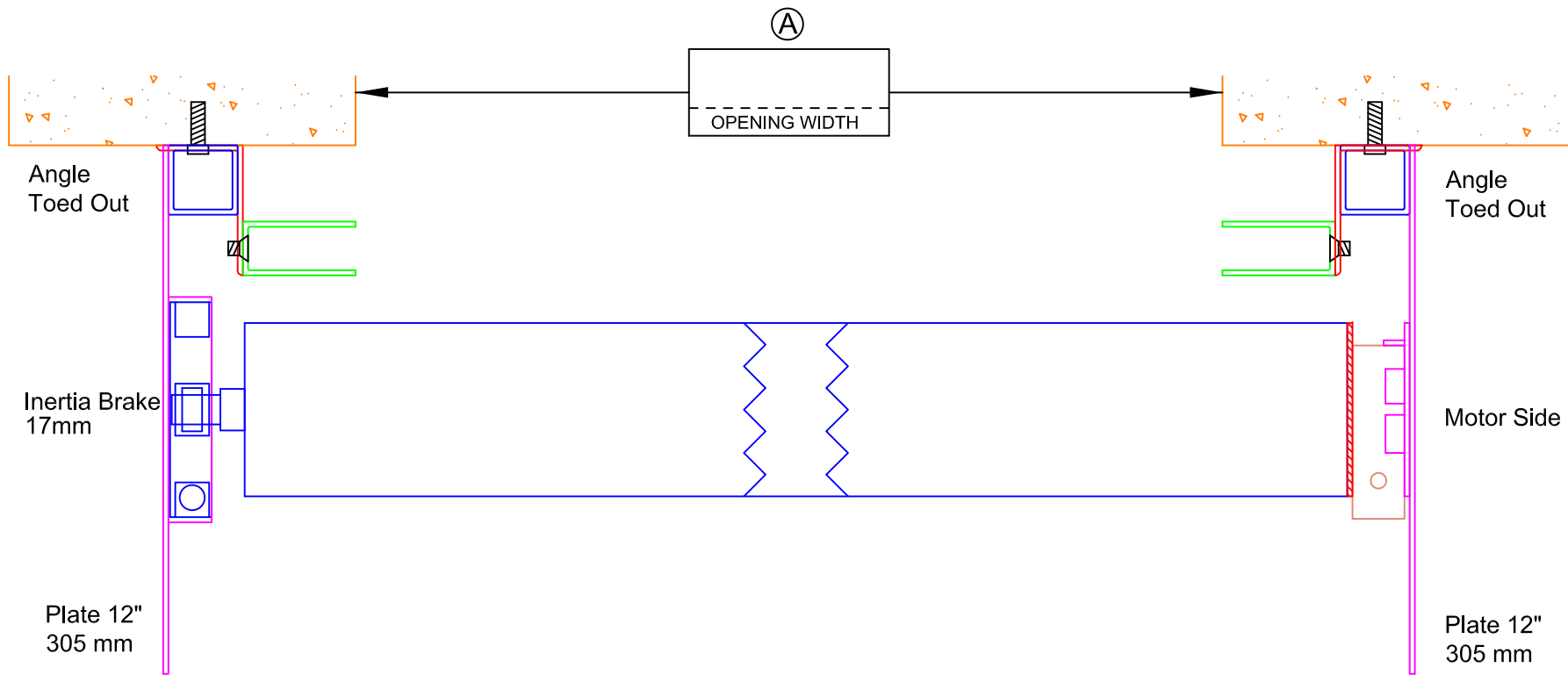
TEL : 020 8532 7940      FAX : 020 8591 1144  
 EMAIL : [info@paramount26.co.uk](mailto:info@paramount26.co.uk)  
 WEBSITE : [www.paramount26.co.uk](http://www.paramount26.co.uk)



**INSTRUCTIONS TO CLIENT**

- PLEASE INSERT MEASUREMENT AT **(A)** AND **(B)**
- SIGN, PRINT NAME AND DATE THE DRAWING
- FAX THE DRAWING TO 020 8591 1144
- OR EMAIL TO [info@paramount26.co.uk](mailto:info@paramount26.co.uk)
- RETAIN COPY FOR YOUR OWN RECORDS

CLIENT
SIGNATURE
PRINT NAME
DATE

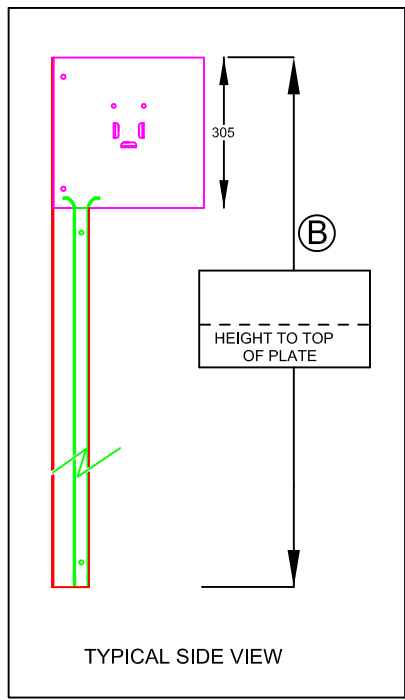


MOTORISED SHUTTER DOOR		LEGEND	
RIGHT HAND MOTOR POST		PLATE 305 mm	2
FACE FIX ANGLE TOED OUT		ANGLE 75 x 50	2
		GUIDE 65 x 25	2
		BOX 40 x 40	2
DRG NO	INERTIA-04	REV	0
DRAWN BY	CADPLAN .NET	SCALE	NTS
		DATE	18/04/2012



**PARAMOUNT 26 LTD**  
 UNIT 5B & C  
 BARKING BUSINESS CENTRE  
 25 THAMES ROAD  
 BARKING, ESSEX IG11 0JP

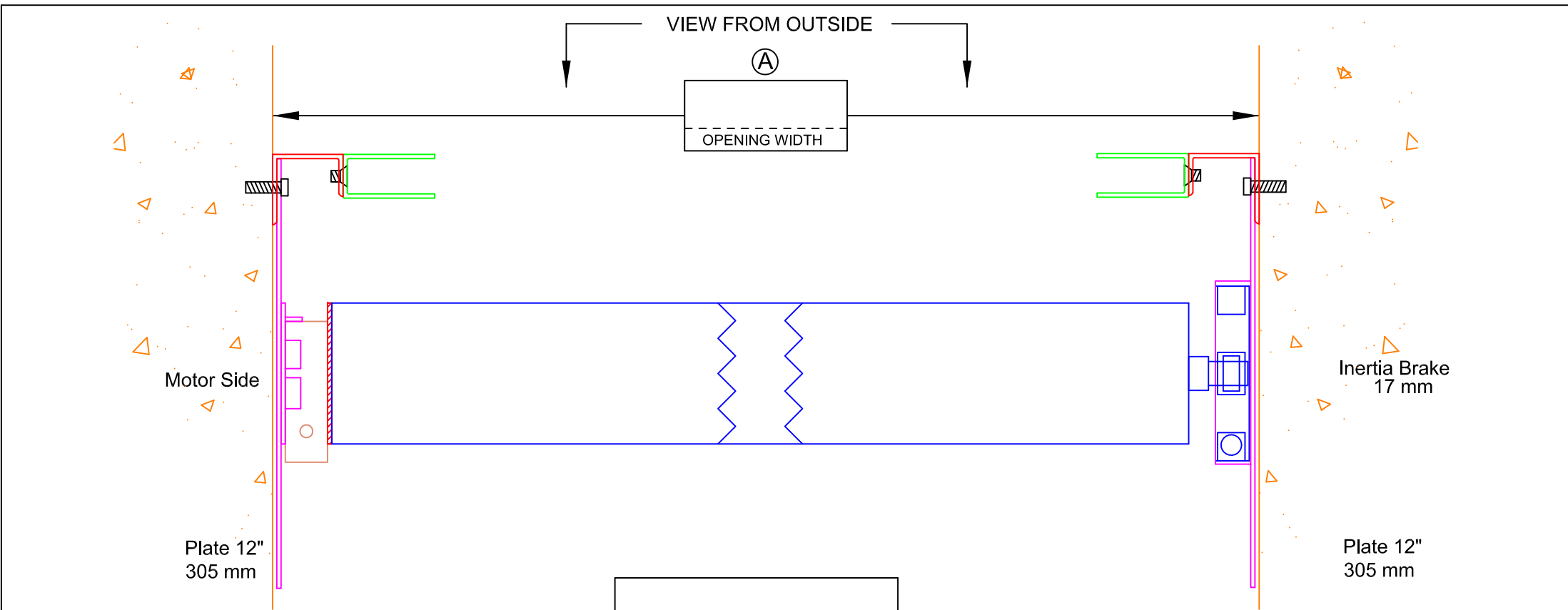
TEL : 020 8532 7940      FAX : 020 8591 1144  
 EMAIL : [info@paramount26.co.uk](mailto:info@paramount26.co.uk)  
 WEBSITE : [www.paramount26.co.uk](http://www.paramount26.co.uk)



**INSTRUCTIONS TO CLIENT**

- PLEASE INSERT MEASUREMENT AT **(A)** AND **(B)**
- SIGN, PRINT NAME AND DATE THE DRAWING
- FAX THE DRAWING TO 020 8591 1144
- OR EMAIL TO [info@paramount26.co.uk](mailto:info@paramount26.co.uk)
- RETAIN COPY FOR YOUR OWN RECORDS

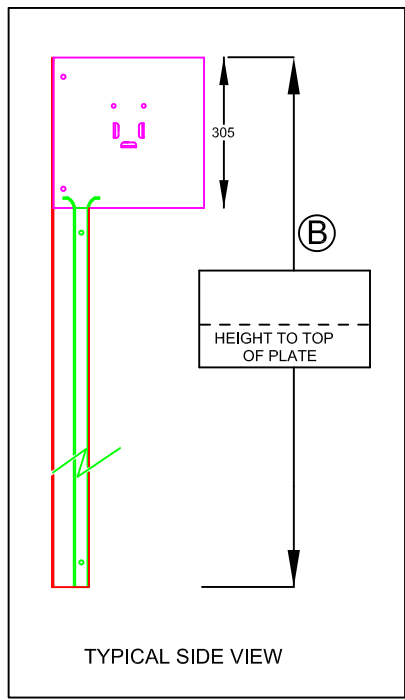
CLIENT
SIGNATURE
PRINT NAME
DATE



MOTORISED SHUTTER DOOR		LEGEND	
LEFT HAND MOTOR POST		PLATE 305 mm	2
TUNNELL FIX		ANGLE 50 x 50 x 30	2
		GUIDE 65 x 25	2
DRG NO	INERTIA-05	REV	0
DRAWN BY	CADPLAN .NET	SCALE	NTS
		DATE	18/04/2012

**PARAMOUNT 26 LTD**  
 UNIT 5B & C  
 BARKING BUSINESS CENTRE  
 25 THAMES ROAD  
 BARKING, ESSEX IG11 0JP

TEL : 020 8532 7940      FAX : 020 8591 1144  
 EMAIL : [info@paramount26.co.uk](mailto:info@paramount26.co.uk)  
 WEBSITE : [www.paramount26.co.uk](http://www.paramount26.co.uk)



**INSTRUCTIONS TO CLIENT**

PLEASE INSERT MEASUREMENT AT **(A)** AND **(B)**

SIGN, PRINT NAME AND DATE THE DRAWING

FAX THE DRAWING TO 020 8591 1144

OR EMAIL TO [info@paramount26.co.uk](mailto:info@paramount26.co.uk)

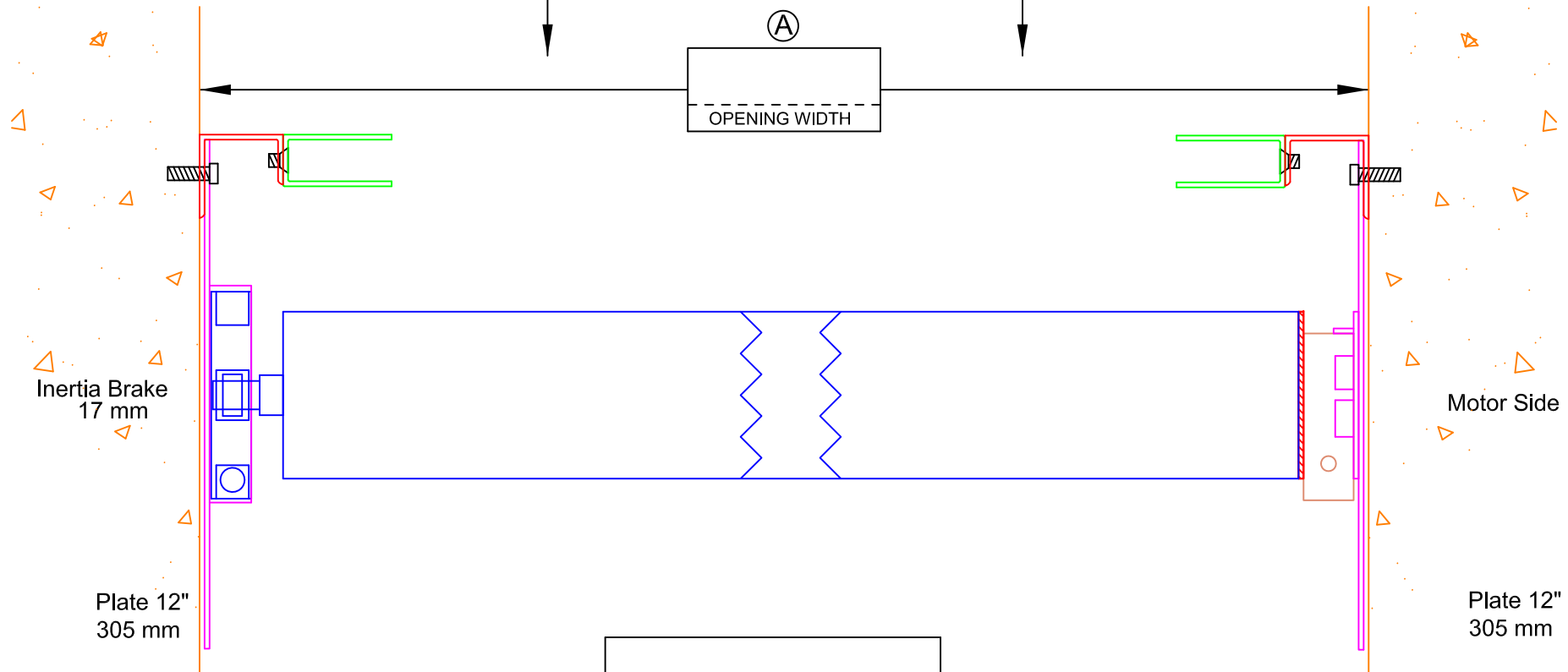
RETAIN COPY FOR YOUR OWN RECORDS

CLIENT
SIGNATURE
PRINT NAME
DATE

VIEW FROM OUTSIDE

(A)

OPENING WIDTH



Inertia Brake  
17 mm

Plate 12"  
305 mm

Motor Side

Plate 12"  
305 mm

**INSTRUCTIONS TO CLIENT**

- PLEASE INSERT MEASUREMENT AT (A) AND (B)
- SIGN, PRINT NAME AND DATE THE DRAWING
- FAX THE DRAWING TO 020 8591 1144
- OR EMAIL TO [info@paramount26.co.uk](mailto:info@paramount26.co.uk)
- RETAIN COPY FOR YOUR OWN RECORDS

CLIENT
SIGNATURE
PRINT NAME
DATE

MOTORISED SHUTTER DOOR		LEGEND	
RIGHT HAND MOTOR POST		PLATE 305 mm	2
TUNNELL FIX		ANGLE 50 x 50 x 30	2
		GUIDE 65 x 25	2
DRG NO	INERTIA-06	REV	0
DRAWN BY	CADPLAN .NET	SCALE	NTS
		DATE	18/04/2012

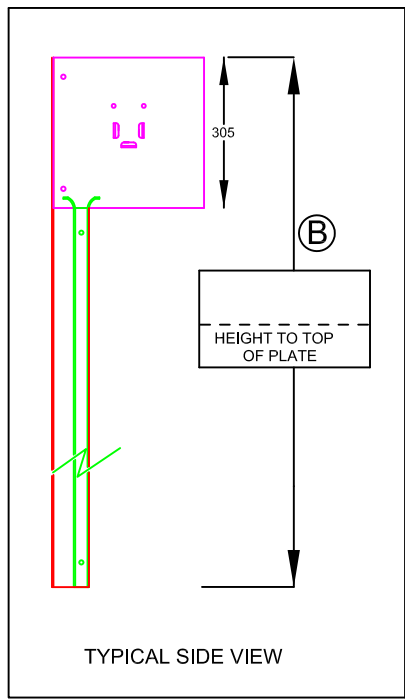
**PARAMOUNT 26 LTD**

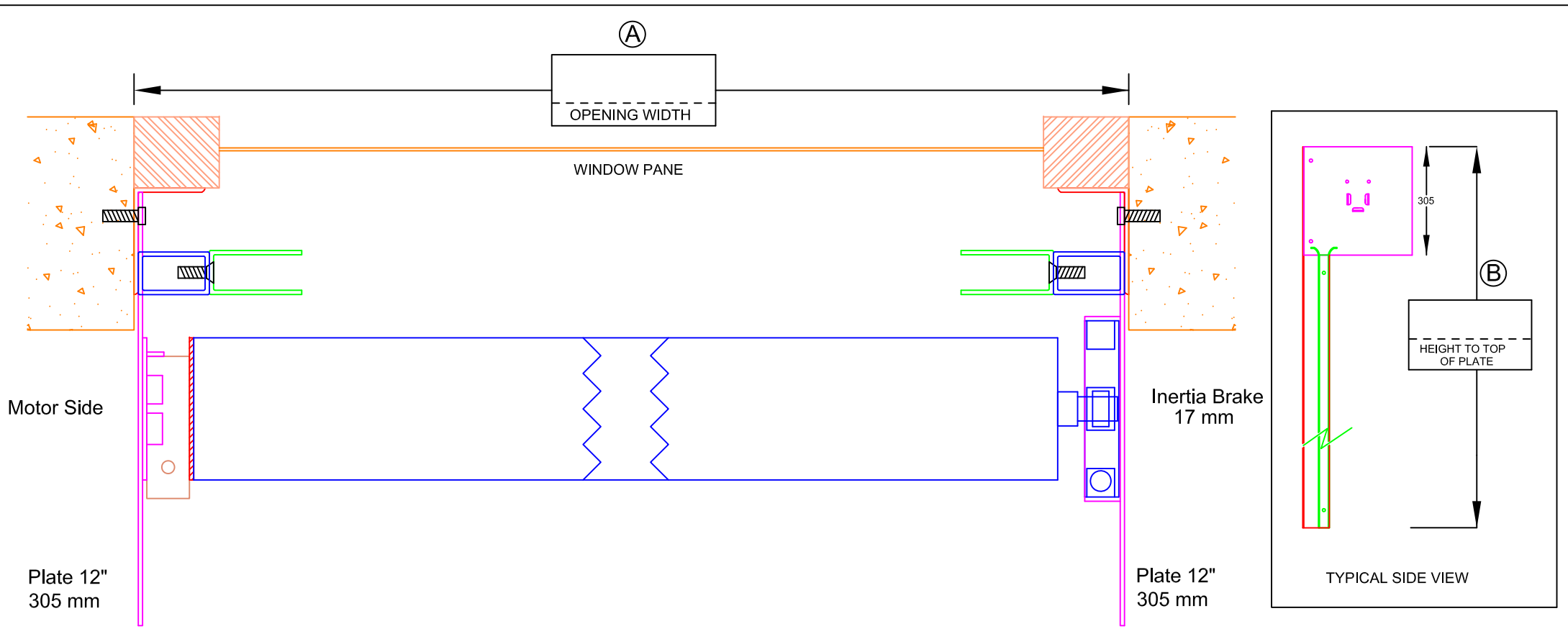
UNIT 5B & C  
BARKING BUSINESS CENTRE  
25 THAMES ROAD  
BARKING, ESSEX IG11 0JP

TEL : 020 8532 7940      FAX : 020 8591 1144

EMAIL : [info@paramount26.co.uk](mailto:info@paramount26.co.uk)

WEBSITE : [www.paramount26.co.uk](http://www.paramount26.co.uk)





MOTORISED SHUTTER DOOR		LEGEND	
LEFT HAND MOTOR POST		PLATE 305 mm	2
REVEAL FIX		ANGLE 75 x 50	2
		GUIDE 65 x 25	2
		BOX 50 x 30	2
DRG NO	INERTIA-07	REV	0
DRAWN BY	CADPLAN .NET	SCALE	NTS
		DATE	18/04/2012

↑  
VIEW FROM OUTSIDE  
↑

**INSTRUCTIONS TO CLIENT**

PLEASE INSERT MEASUREMENT AT **(A)** AND **(B)**

SIGN, PRINT NAME AND DATE THE DRAWING

FAX THE DRAWING TO 020 8591 1144

OR EMAIL TO [info@paramount26.co.uk](mailto:info@paramount26.co.uk)

RETAIN COPY FOR YOUR OWN RECORDS



**PARAMOUNT 26 LTD**

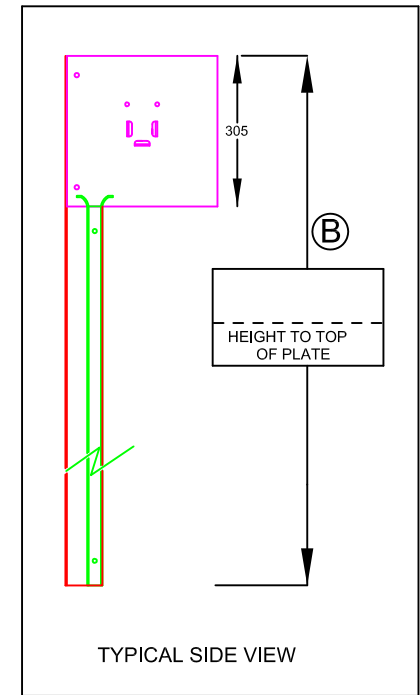
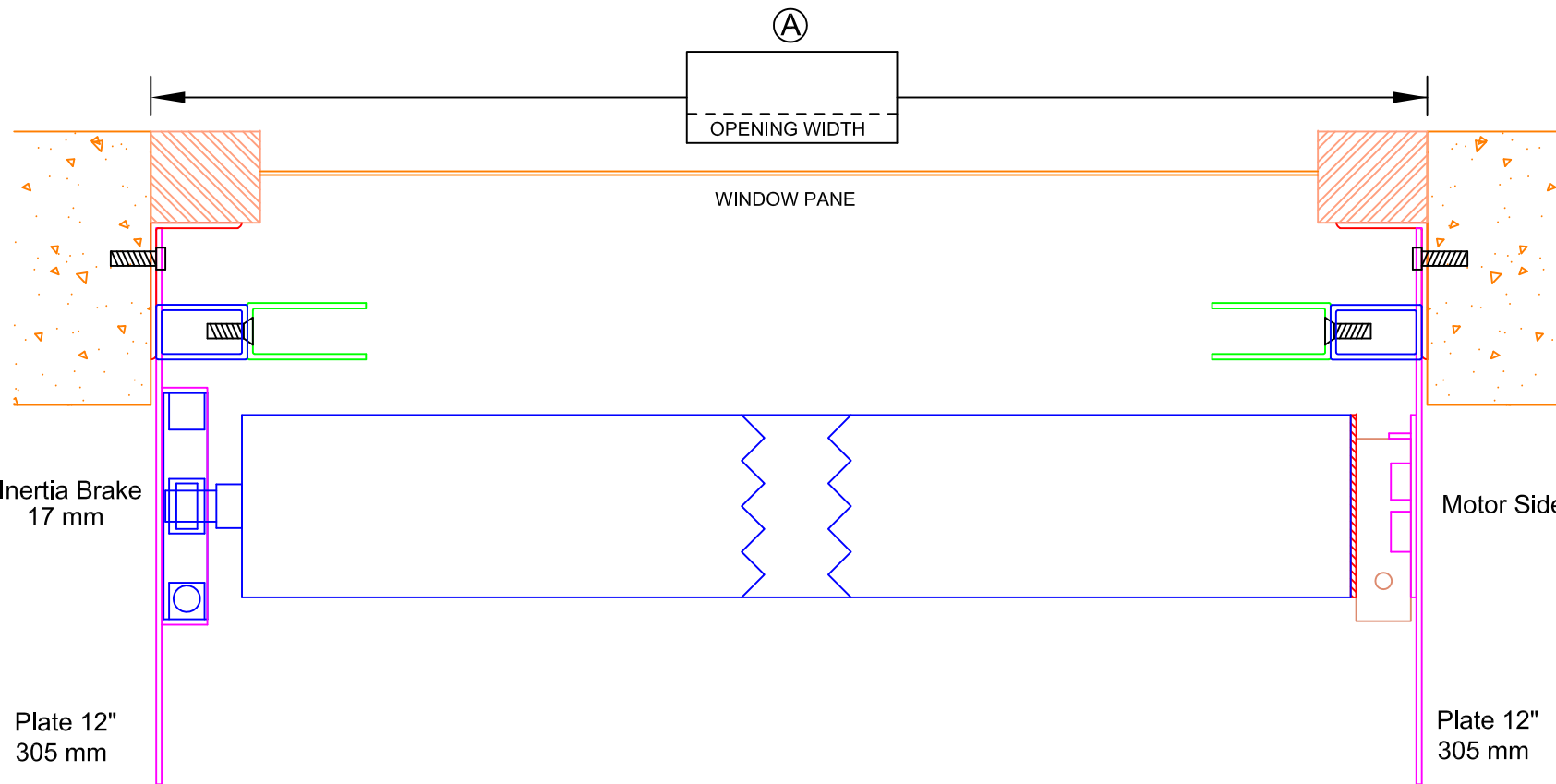
UNIT 5B & C  
BARKING BUSINESS CENTRE  
25 THAMES ROAD  
BARKING, ESSEX IG11 0JP

TEL : 020 8532 7940      FAX : 020 8591 1144

EMAIL : [info@paramount26.co.uk](mailto:info@paramount26.co.uk)

WEBSITE : [www.paramount26.co.uk](http://www.paramount26.co.uk)

CLIENT
SIGNATURE
PRINT NAME
DATE



MOTORISED SHUTTER DOOR		LEGEND	
RIGHT HAND MOTOR POST		PLATE 305 mm	2
REVEAL FIX		ANGLE 75 x 50	2
		GUIDE 65 x 25	2
		BOX 50 x 30	2
DRG NO	INERTIA-08	REV	0
DRAWN BY	CADPLAN .NET	SCALE	NTS
		DATE	18/04/2012

↑  
VIEW FROM OUTSIDE  
↑

### INSTRUCTIONS TO CLIENT

PLEASE INSERT MEASUREMENT AT (A) AND (B)
SIGN, PRINT NAME AND DATE THE DRAWING
FAX THE DRAWING TO 020 8591 1144
OR EMAIL TO <a href="mailto:info@paramount26.co.uk">info@paramount26.co.uk</a>
RETAIN COPY FOR YOUR OWN RECORDS



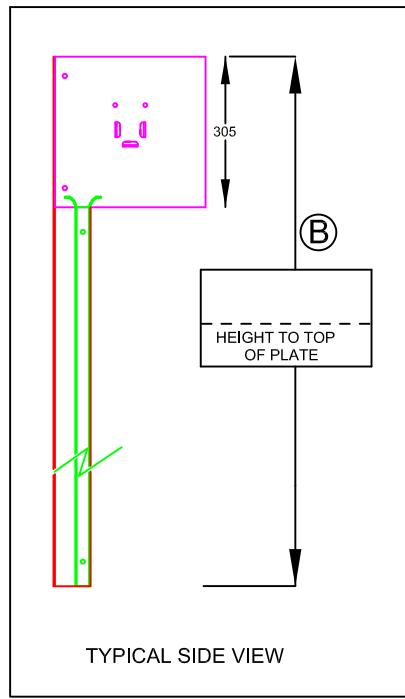
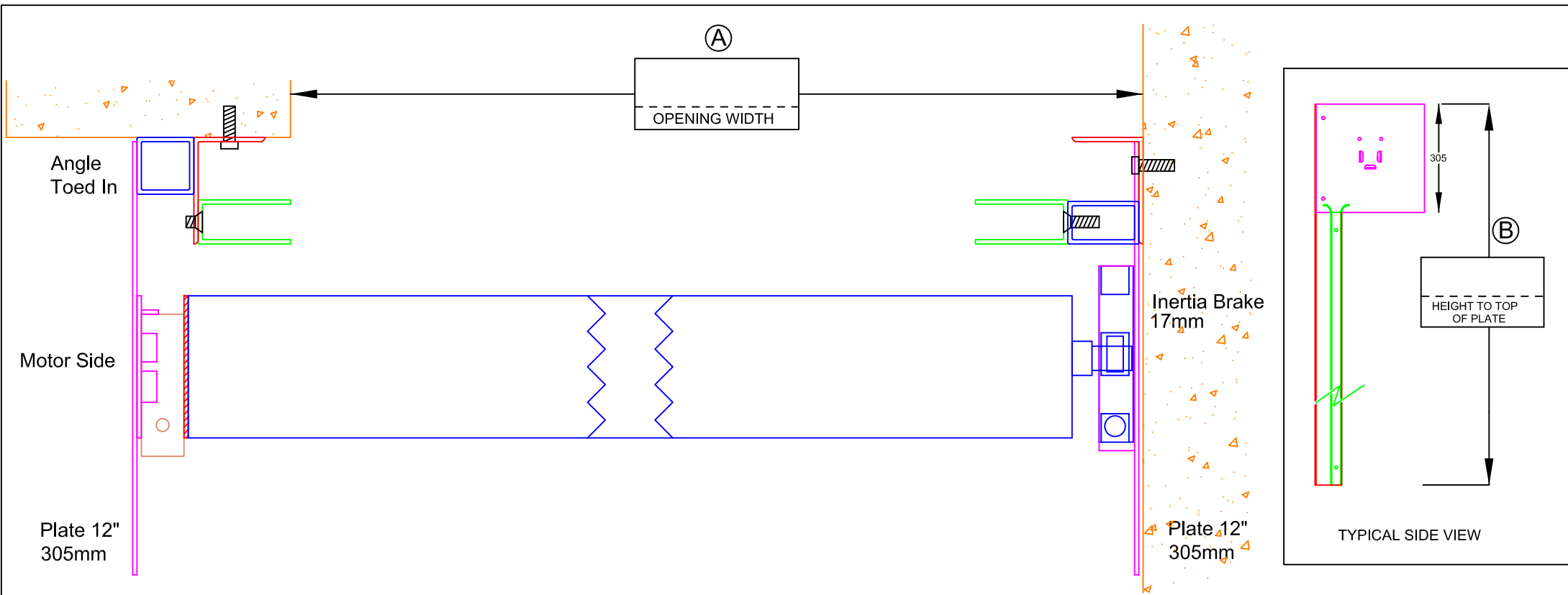
**PARAMOUNT 26 LTD**

UNIT 5B & C  
BARKING BUSINESS CENTRE  
25 THAMES ROAD  
BARKING, ESSEX IG11 0JP

TEL : 020 8532 7940	FAX : 020 8591 1144
EMAIL : <a href="mailto:info@paramount26.co.uk">info@paramount26.co.uk</a>	
WEBSITE : <a href="http://www.paramount26.co.uk">www.paramount26.co.uk</a>	

CLIENT
SIGNATURE
PRINT NAME
DATE





**INSTRUCTIONS TO CLIENT**

- PLEASE INSERT MEASUREMENT AT **(A)** AND **(B)**
- SIGN, PRINT NAME AND DATE THE DRAWING
- FAX THE DRAWING TO 020 8591 1144
- OR EMAIL TO [info@paramount26.co.uk](mailto:info@paramount26.co.uk)
- RETAIN COPY FOR YOUR OWN RECORDS

CLIENT
SIGNATURE
PRINT NAME
DATE

MOTORISED SHUTTER DOOR		LEGEND	
LEFT HAND MOTOR POST	PLATE 305mm	2	
LEFT FACE FIX	ANGLE 75 x 50	2	
RIGHT REVEAL FIX	GUIDE 65 x 25	2	
	BOX 40 x 40	1	
	BOX 50 x 30	1	
DRG NO	INERTIA-09	REV	0
DRAWN BY	CADPLAN .NET	SCALE	NTS
		DATE	18/04/2012

↑  
VIEW FROM OUTSIDE  
↑

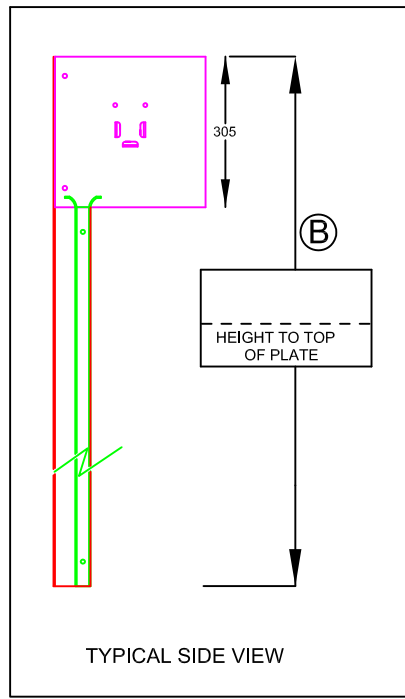
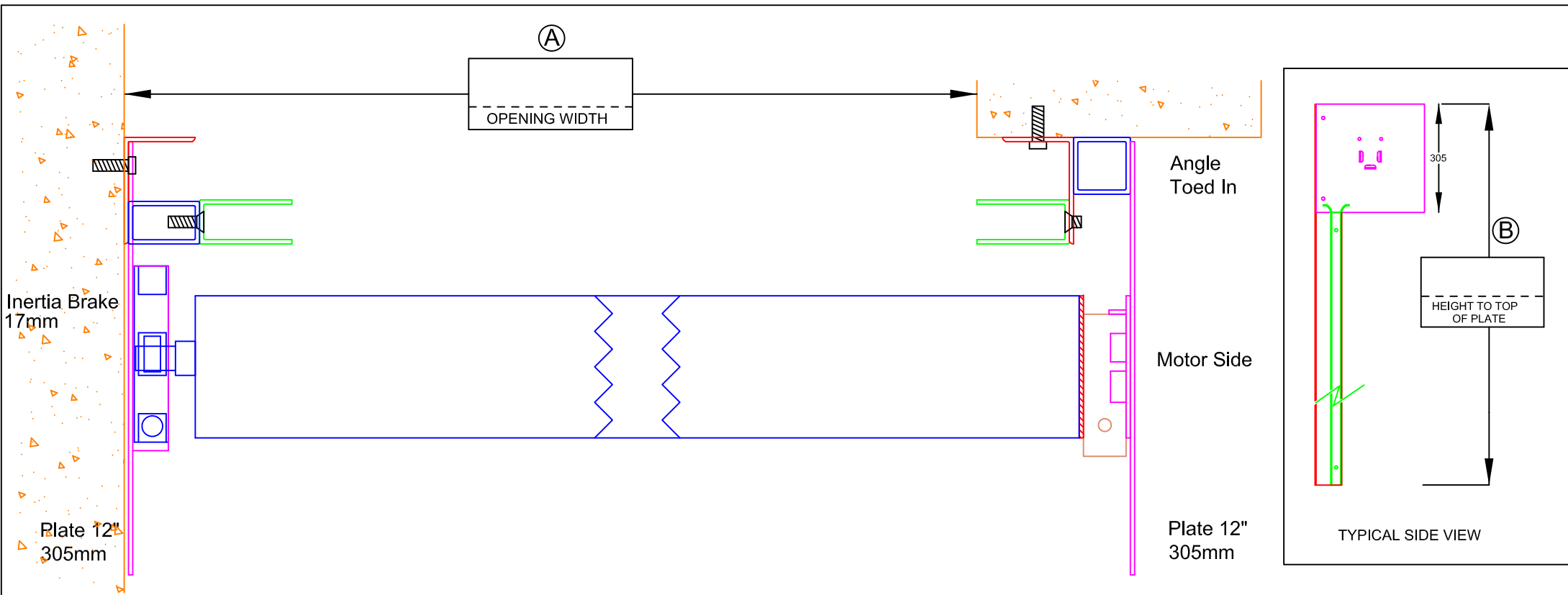


**PARAMOUNT 26 LTD**  
 UNIT 5B & C  
 BARKING BUSINESS CENTRE  
 25 THAMES ROAD  
 BARKING, ESSEX IG11 0JP

TEL : 020 8532 7940      FAX : 020 8591 1144

EMAIL : [info@paramount26.co.uk](mailto:info@paramount26.co.uk)

WEBSITE : [www.paramount26.co.uk](http://www.paramount26.co.uk)



**INSTRUCTIONS TO CLIENT**

PLEASE INSERT MEASUREMENT AT **A** AND **B**  
 SIGN, PRINT NAME AND DATE THE DRAWING  
 FAX THE DRAWING TO 020 8591 1144  
 OR EMAIL TO [info@paramount26.co.uk](mailto:info@paramount26.co.uk)  
 RETAIN COPY FOR YOUR OWN RECORDS

CLIENT
SIGNATURE
PRINT NAME
DATE

MOTORISED SHUTTER DOOR		LEGEND	
RIGHT HAND MOTOR POST		PLATE 305mm	2
RIGHT FACE FIX		ANGLE 75 x 50	2
LEFT REVEAL FIX		GUIDE 65 x 25	2
		BOX 40 x 40	1
		BOX 50 x 30	1
DRG NO	INERTIA 10	REV	0
DRAWN BY	CADPLAN .NET	SCALE	NTS
		DATE	18/04/2012

↑ VIEW FROM OUTSIDE ↓



**PARAMOUNT 26 LTD**

UNIT 5B & C  
 BARKING BUSINESS CENTRE  
 25 THAMES ROAD  
 BARKING, ESSEX IG11 0JP

TEL : 020 8532 7940      FAX : 020 8591 1144

EMAIL : [info@paramount26.co.uk](mailto:info@paramount26.co.uk)

WEBSITE : [www.paramount26.co.uk](http://www.paramount26.co.uk)