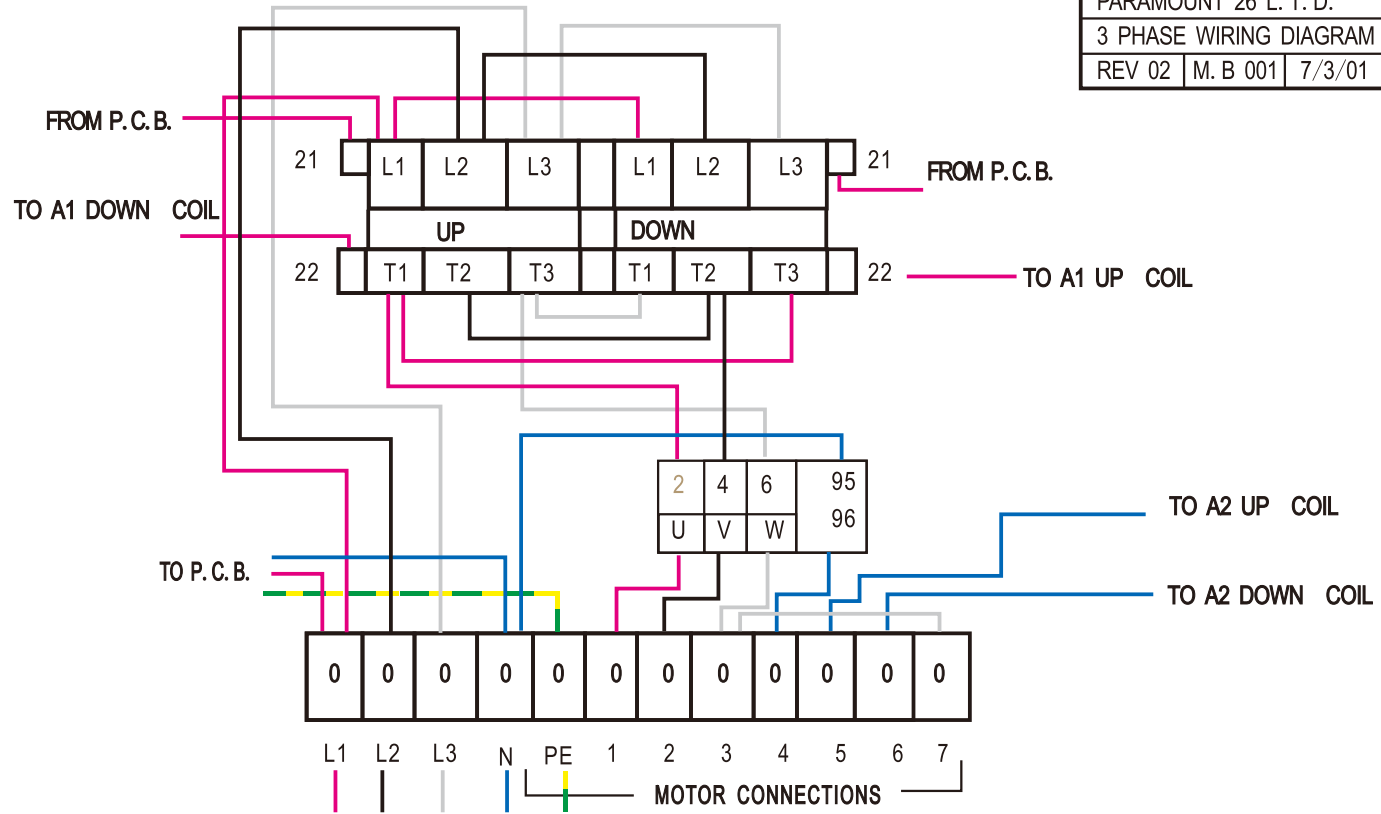
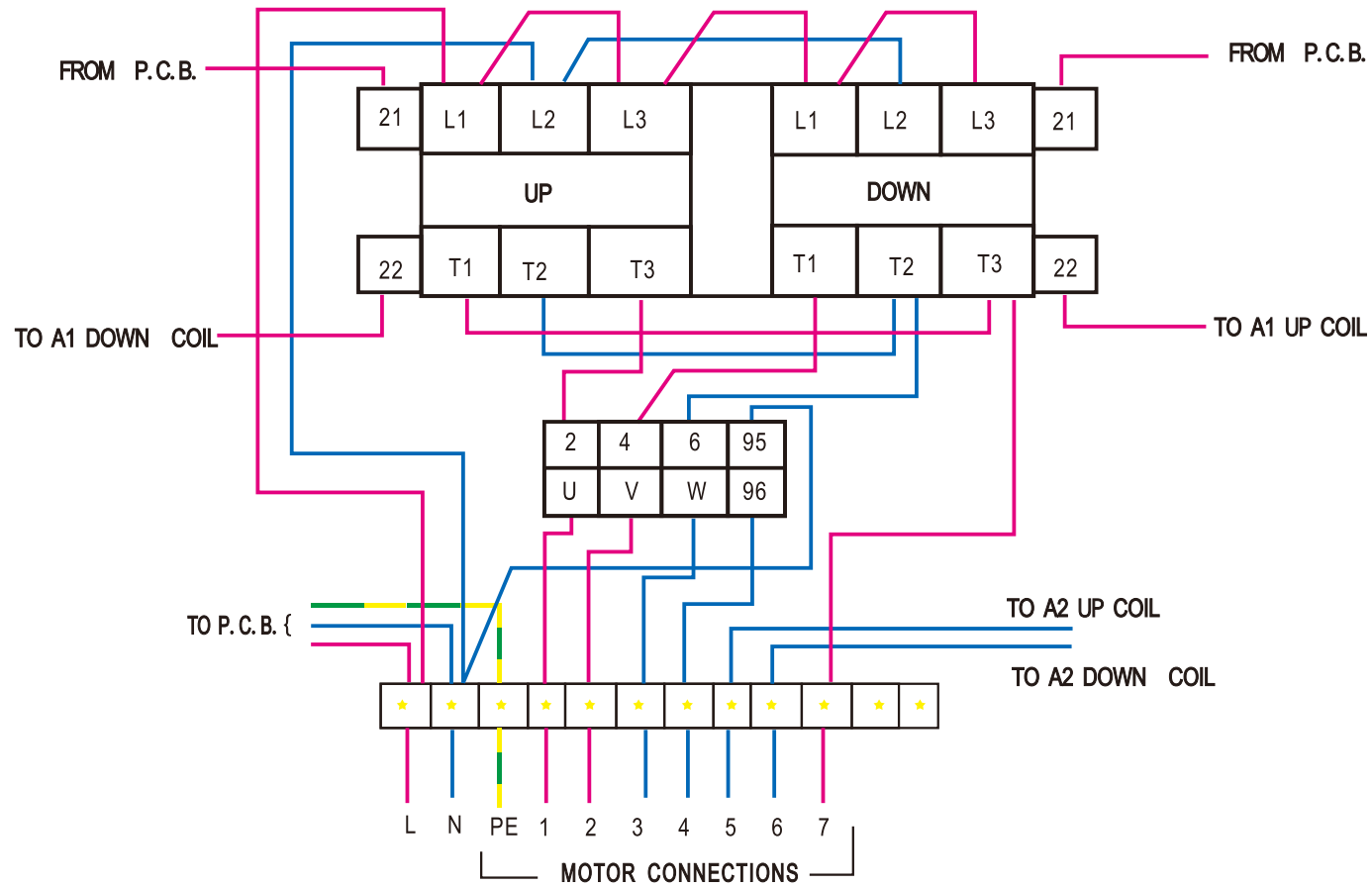


PARAMOUNT 26 L. T. D.		
3 PHASE WIRING DIAGRAM		
REV 02	M. B 001	7/3/01



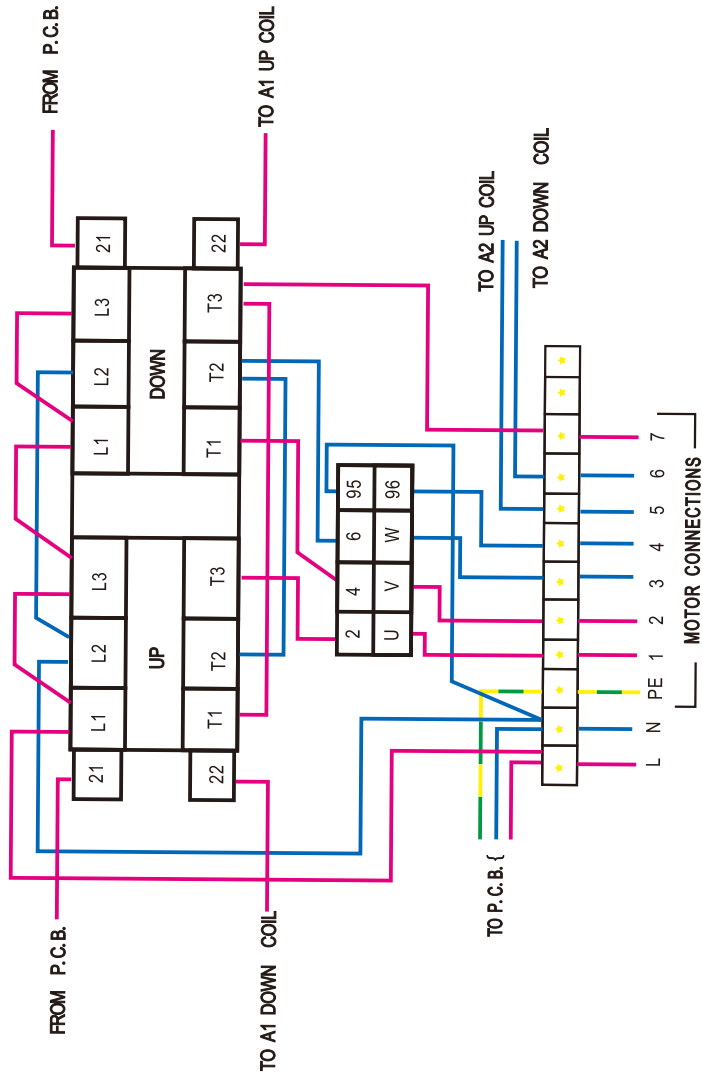
Note: If motor direction is wrong, change terminal no's 1+2 on motor,
 If limit direction is wrong, change terminal no's 5+6 on motor.

PARAMOUNT 26 L. T. D.		
SINGLE PHASE WIRING DIAGRAM		
REV 02	M. B 001	10/03/07



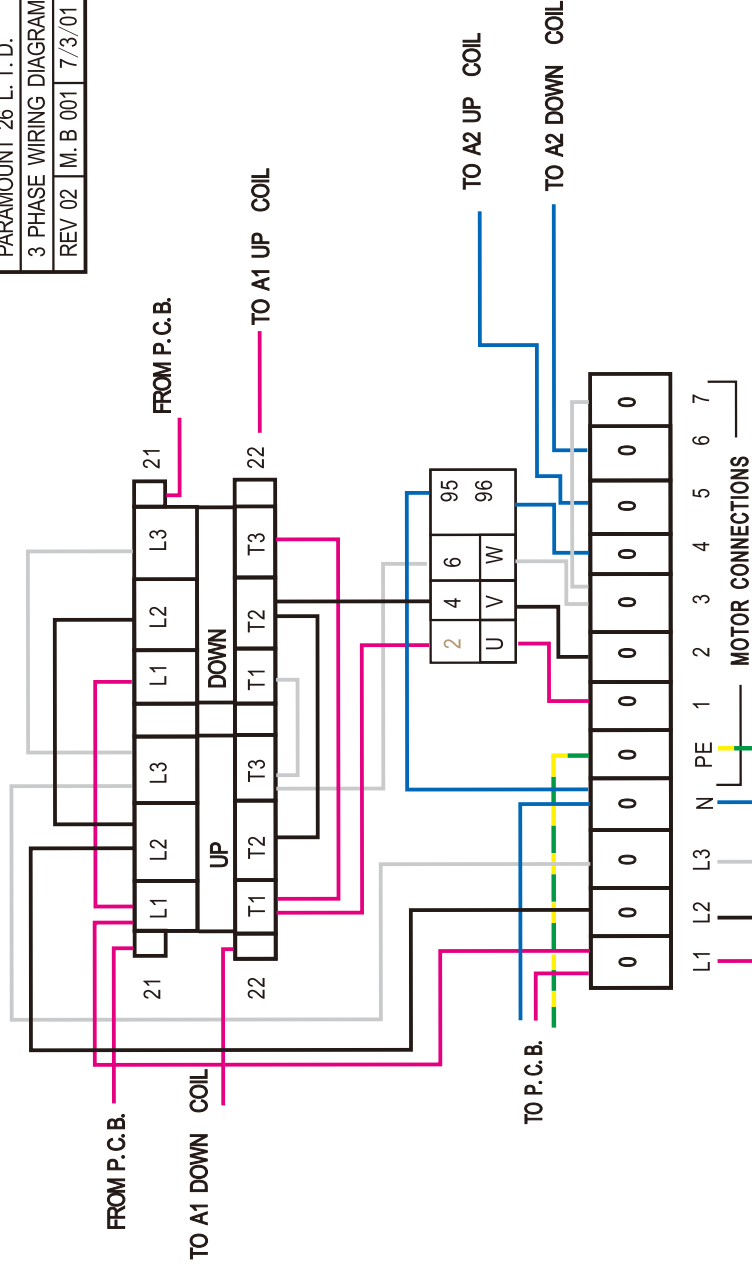
Note: If motor direction is wrong, change terminal no's 18. 2 on motor,
 If limit direction is wrong, change terminal no's 58. 6 on motor.

PARAMOUNT 26 L. T. D.
 SINGLE PHASE WIRING DIAGRAM
 REV 02 | M. B 001 | 10/03/07



Note: If motor direction is wrong, change terminal no's 18, 2 on motor,
 If limit direction is wrong, change terminal no's 58, 6 on motor.

PARAMOUNT 26 L. T. D.
 3 PHASE WIRING DIAGRAM
 REV 02 | M. B 001 | 7/3/01



Note: If motor direction is wrong, change terminal no's 1+2 on motor,
 If limit direction is wrong, change terminal no's 5+6 on motor.