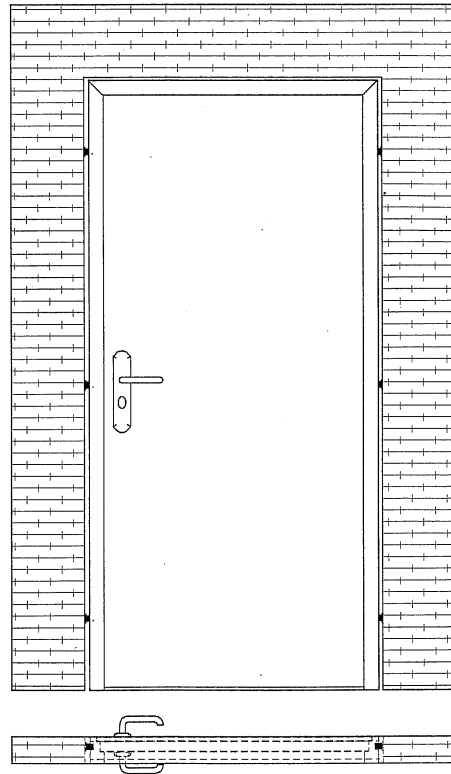
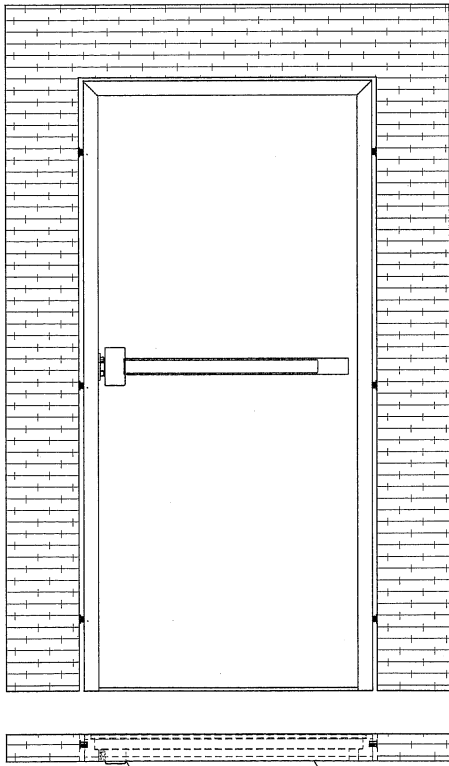


**INSTALLATION INSTRUCTIONS FOR
EMERGENCY EXIT
AND SECURITY DOOR**



TOOL AND FIXINGS CHECK LIST

6 No FIXING BOLTS (CONCRETE)

6 No FIXING BOLTS (STEEL)

1 SPANNER

1 DRILL BIT (CONCRETE)

1 DRILL BIT (STEEL)

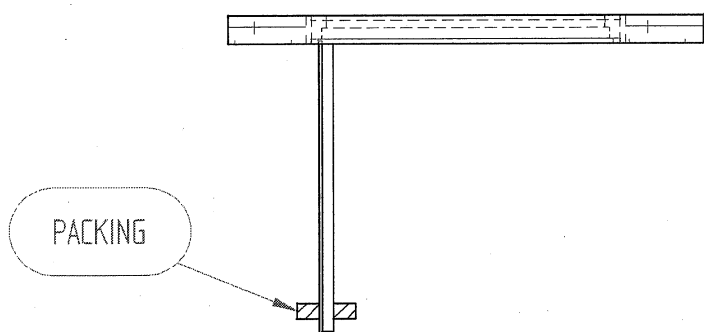
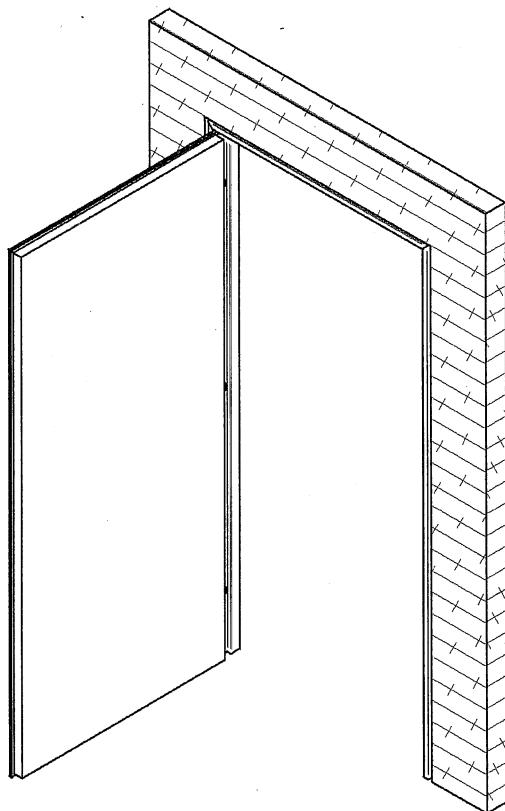
6 JACKING BOLTS

1 ALLEN KEY

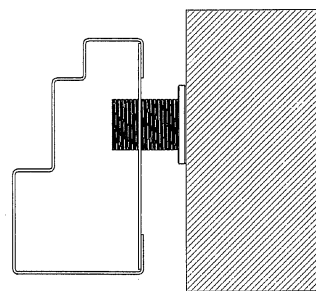
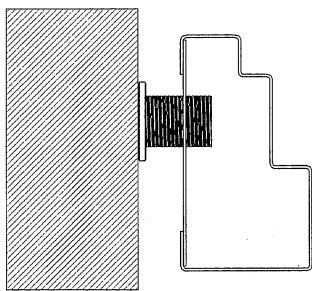
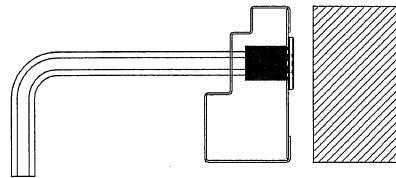
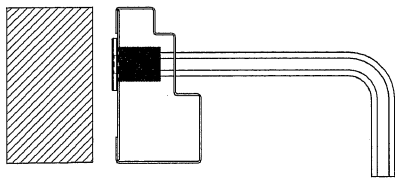
1 PAIR HANDLES (SECURITY MODEL ONLY)

**PARAMOUNT EMERGENCY EXIT DOORS ARE FIRE
RATED CERT No : WF 152580**

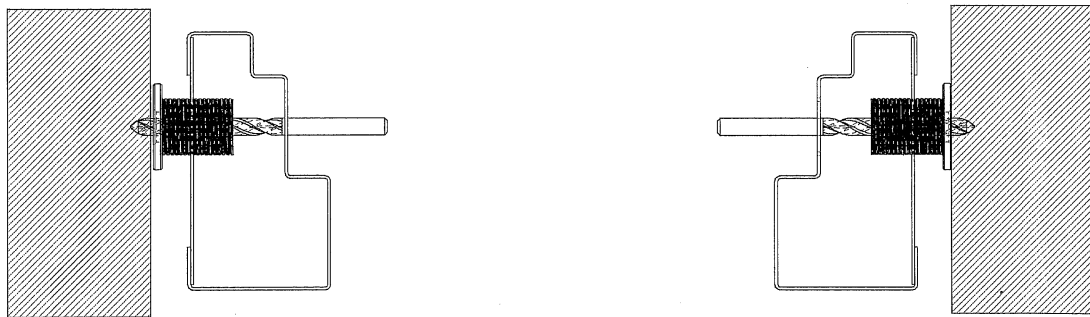
**OPEN THE DOOR AND MOVE INTO POSITION.
TO PLUMB PUT PACKING UNDER DOOR LEAF.**



**SCREW JACKING BOLTS SOFTLY AGAINST
THE OPENING (TOP-BOTTOM-MIDDLE)
PLUMB FRAME AND GENTLY TIGHTEN
JACKING BOLTS.**



**HAVING ENSURE THAT THE FRAME IS PLUMB
DRILL STEEL / CONCRETE**



INSERT FIXING BOLTS AND TIGHTEN.

